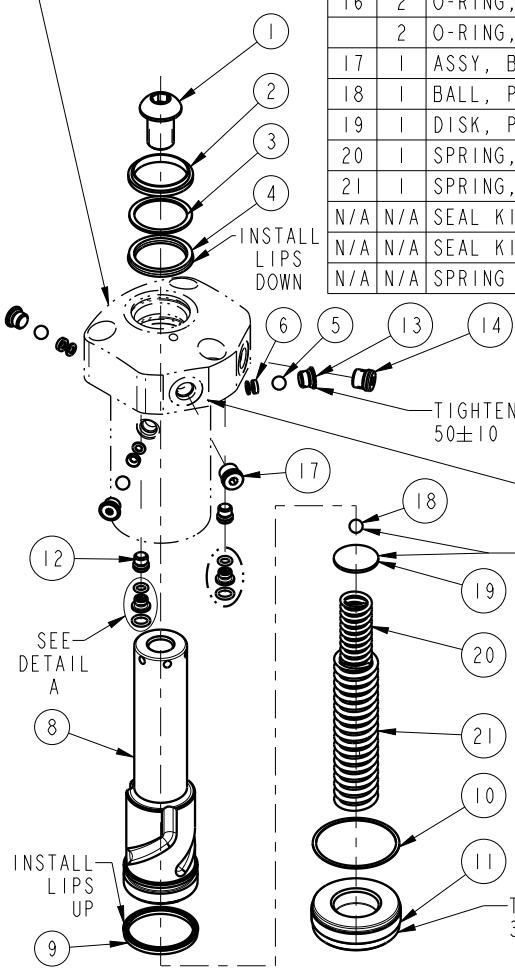
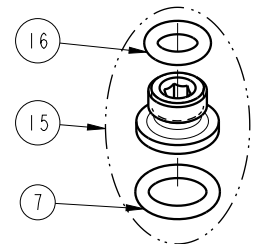
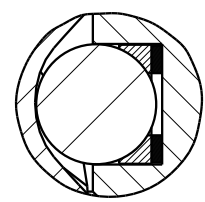


NO.	QTY.	DESCRIPTION	MODEL NO.	STANDARD SEAL KIT	FLUOROCARBON SEAL KIT	SPRING KIT
			14-6118-02-X			
1	1	BUTTON HEAD CAP SCREW	21-4100-22	NO	NO	NO
2	1	WIPER, ROD (FLUOROCARBON)	39-0530-05	YES	YES	NO
3	1	BACK-UP RING, ROD	39-0540-08	YES	YES	NO
4	1	SEAL, ROD (STANDARD)	39-0110-60	YES	NO	NO
	1	SEAL, ROD (FLUOROCARBON)	39-0520-15	NO	YES	NO
5	3	BALL, STEEL ALLOY	23-6000-13	YES	YES	NO
6	3	ASSY, BALL SEAT	90-1999-59	YES	YES	NO
7	2	O-RING, MANIFOLD (STANDARD)	39-0500-42	YES*	NO	NO
	2	O-RING, MANIFOLD (FLUOROCARBON)	39-0510-25	NO	YES*	NO
8	1	PLUNGER, LEFT HAND (SHOWN)	81-4000-59	NO	NO	NO
	1	PLUNGER, RIGHT HAND	81-4000-58	NO	NO	NO
	1	PLUNGER, STRAIGHT	81-4000-75	NO	NO	NO
9	1	SEAL, PLUNGER (STANDARD)	39-0110-55	YES	NO	NO
	1	SEAL, PLUNGER (FLUOROCARBON)	39-0520-13	NO	YES	NO
10	1	GASKET, RETAINER	39-T550-04	YES	YES	YES
11	1	RETAINER	81-5318-00	NO	NO	NO
12	2	PLUG, SOCH, SAE 2	30-6011-22	NO	NO	NO
13	3	ASSY, PLUG, SAE 3	30-6011-30	NO	NO	NO
14	1	PLUG, SOCH, SAE 4	30-6011-44	NO	NO	NO
15	2	ASSY, ADAPTER, MANIFOLD MOUNT	30-8711-20	YES	NO	NO
	2	ASSY, ADAPTER, MM (FLUOROCARBON)	30-8711-20F	NO	YES	NO
16	2	O-RING, ADAPTER (STANDARD)	39-0500-36	YES*	NO	NO
	2	O-RING, ADAPTER (FLUOROCARBON)	39-0510-24	NO	YES*	NO
17	1	ASSY, BREATHER, SAE 4	92-0900-01	NO	NO	NO
18	1	BALL, PIVOT	23-6000-13	NO	NO	YES
19	1	DISK, PIVOT	81-5918-00	NO	NO	YES
20	1	SPRING, INNER	23-3140-10	NO	NO	YES
21	1	SPRING, OUTER	23-3140-09	NO	NO	YES
N/A	N/A	SEAL KIT (STANDARD)	60-1400-17	INCLUDED IN KIT		
N/A	N/A	SEAL KIT (FLUOROCARBON)	6V-1400-17			
N/A	N/A	SPRING KIT	61-1400-06			

BODY
NON-REPLACEMENT PART



*NOTE: ITEMS INCLUDED IN NO. 15



DETAIL A
SCALE 1.000



LUBRICATE ALL SEALS WITH
CLEAN HYDRAULIC FLUID
PRIOR TO ASSEMBLY.

PARTS LIST		
	VEKTEK, INC. 1334 E. SIXTH AVE. P.O. BOX 625 EMPORIA, KS. 66801 U.S.A.	
	ASSEMBLIES AFFECTED 14-6118-02-L 14-6118-02-R 14-6118-02-S	PARTS LIST, SC, HS, TF, 5000, SA
SIZE A	PL1426	REV F

F	5279	RELEASE	ALS	4/26/24
REV	IN ACCORDANCE WITH ECN	EFFECTIVE DATE	REVISED BY	DATE
DRW BY:	K. ROEMER	DRAWING STATUS: Released		
DATE:	07/28/10	PRODUCTION APPROVED FOR RELEASED STATUS ONLY		

SHEET 1 OF 1